

Florida Students Using Benchmark Advance Show FAST ELA Gains

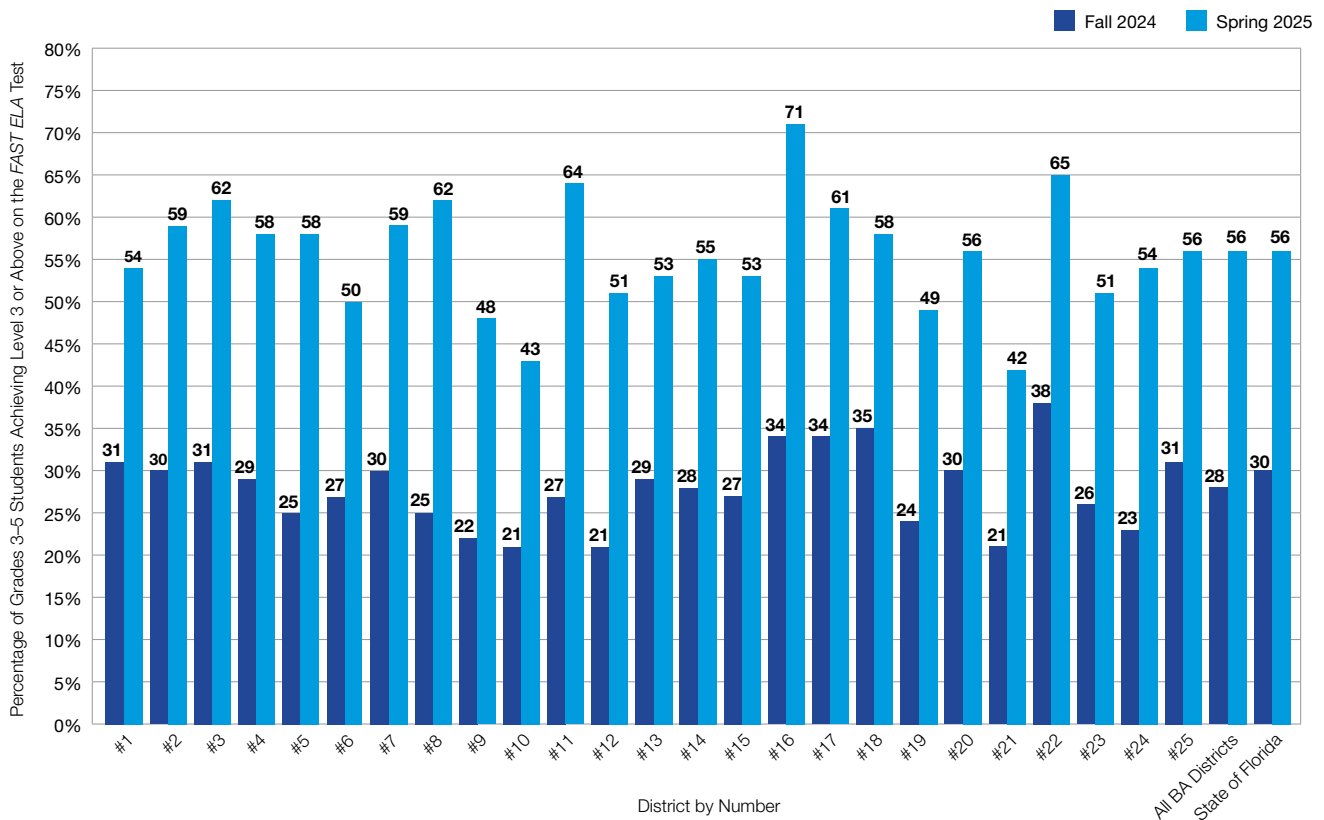
Implementation

Benchmark Education Company analyzed publicly available Grades 3–5 data from the Fall 2024 and Spring 2025 *Florida Assessment of Student Thinking® (FAST) English Language Arts (ELA)* test. *FAST ELA* results are reported using five performance levels, with Level 3 indicating grade-level proficiency.

Impact

From Fall 2024 to Spring 2025, Florida districts using *Benchmark Advance* saw notable increases in the percentage of Grades 3–5 students reaching proficiency on the *FAST ELA* (see Figure 1). Across all *Benchmark Advance* districts, the percentage of students achieving proficiency or above doubled during this period. Several districts posted gains of 32 percentage points or more.

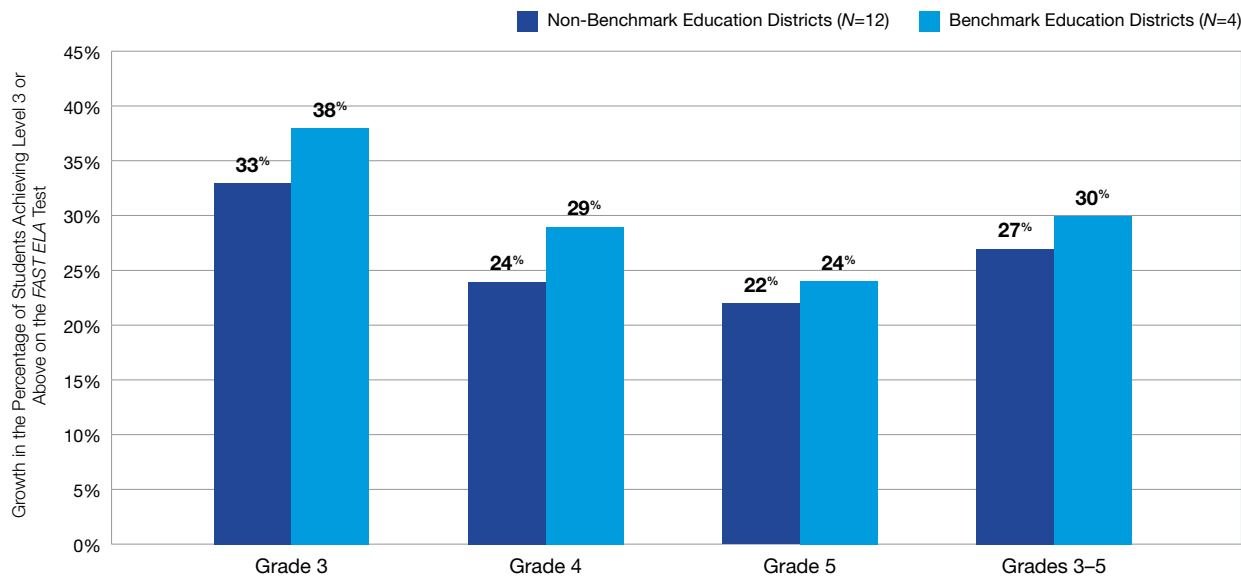
FIGURE 1. Florida *Benchmark Advance* Students and State of Florida, Grades 3–5 Proficiency on the *FAST ELA* Test from Fall 2024 to Spring 2025



Higher Proficiency Rates in Low-SES Benchmark Advance Districts

In Grades 3–5, Florida districts with over 60% low-SES students using *Benchmark Advance* consistently outperformed demographically similar districts not using the program on the *FAST ELA*. Across all grades, *Benchmark Advance* districts showed greater gains in the percentage of students reaching Level 3 proficiency or higher (see Figure 2).

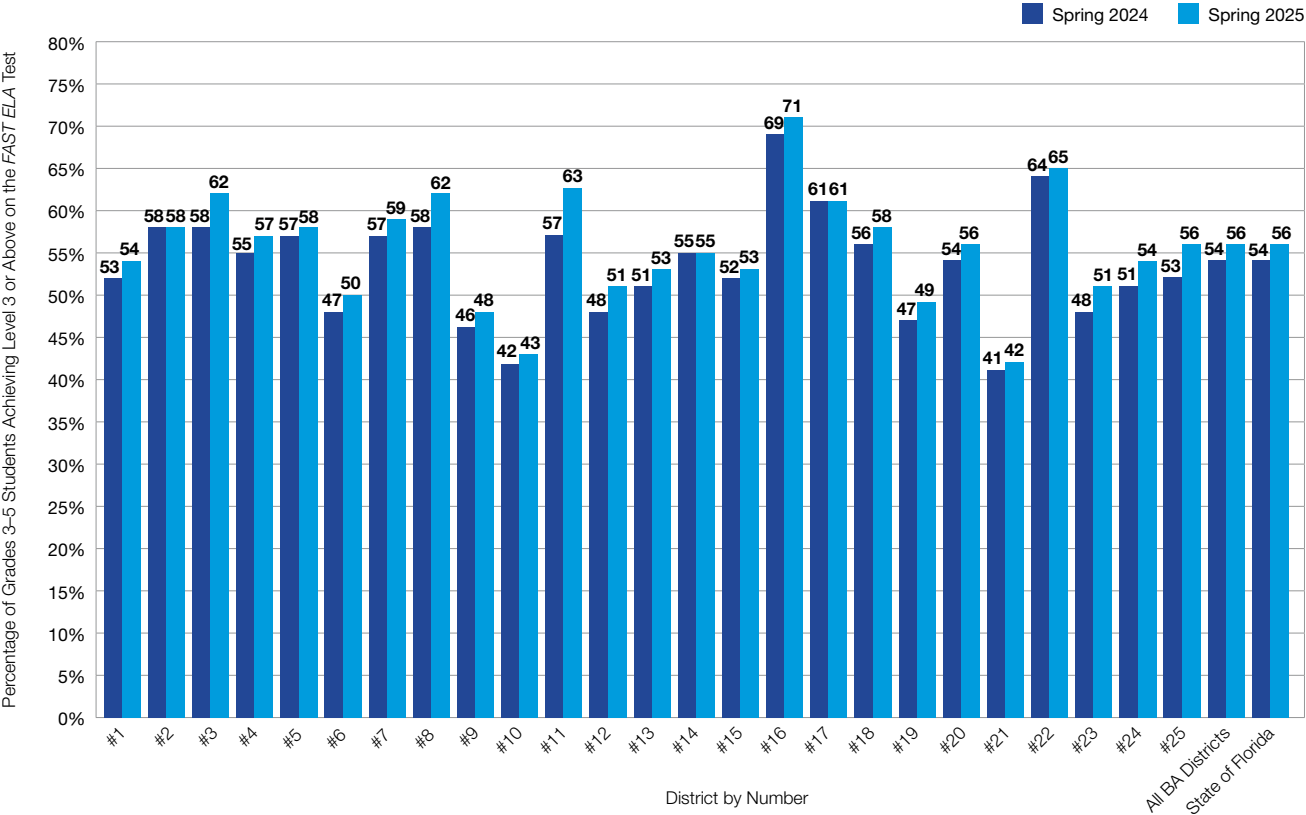
FIGURE 2. Florida *Benchmark Advance* and Florida Non-*Benchmark Advance* Districts with >60% Low-SES Student Population, Grades 3–5, Growth in Proficiency on the *FAST ELA* Test from Fall 2024 to Spring 2025



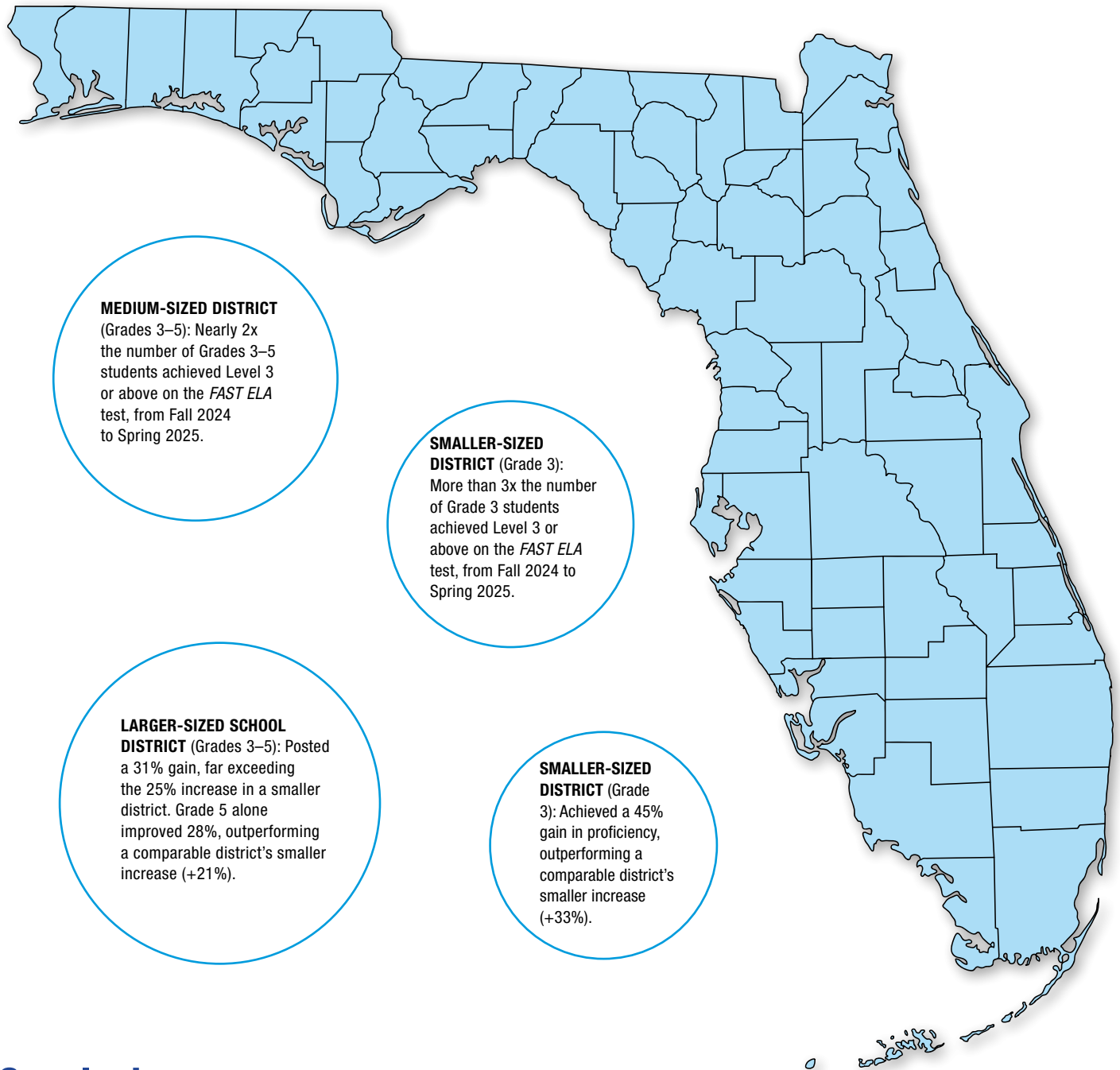
Benchmark Advance Districts Show Year-Over-Year Proficiency Gains

In Grades 3–5, districts using *Benchmark Advance* increased the percentage of students reaching Level 3 proficiency or higher on the *FAST ELA* between Spring 2024 and Spring 2025 (see Figure 3). Several districts increased the percentage of students scoring at proficiency or higher by 4% to 6%, surpassing the district average and the state’s increase of 2%.

FIGURE 3. Florida *Benchmark Advance* Students and State of Florida, Grades 3–5 Proficiency on the *FAST ELA* Test from Spring 2024 to Spring 2025



Individual District Successes Highlight Benchmark Advance's Impact on ELA Scores



Conclusion

These findings show that *Benchmark Advance* not only supports overall growth in ELA proficiency but also helps close achievement gaps in districts serving a high percentage of low-SES students.

